



# Title Plan - LT 480473

---

**Survey Number** LT 480473  
**Surveyor Reference** E18499 LH5B  
**Surveyor** Christopher David Hawes  
**Survey Firm** Davie Lovell-Smith Ltd  
**Surveyor Declaration**

---

## Survey Details

**Dataset Description** Lots 294-296, 313-343, 350-371, 380-382, 942, 952-954 and 963 being Subdivision of Lot 942 DP 474650

**Status** Initiated

**Land District** Canterbury **Survey Class** Class A

**Submitted Date** **Survey Approval Date**  
**Deposit Date**

---

## Territorial Authorities

Christchurch City

---

## Comprised In

CT 652502

---

## Created Parcels

Parcels	Parcel Intent	Area	CT Reference
Lot 294 Deposited Plan 480473	Fee Simple Title	0.0311 Ha	671373
Lot 295 Deposited Plan 480473	Fee Simple Title	0.0311 Ha	671374
Lot 296 Deposited Plan 480473	Fee Simple Title	0.0306 Ha	671375
Lot 313 Deposited Plan 480473	Fee Simple Title	0.0290 Ha	671376
Lot 314 Deposited Plan 480473	Fee Simple Title	0.0290 Ha	671377
Lot 315 Deposited Plan 480473	Fee Simple Title	0.0296 Ha	671378
Lot 316 Deposited Plan 480473	Fee Simple Title	0.0549 Ha	671379
Lot 317 Deposited Plan 480473	Fee Simple Title	0.0549 Ha	671380
Lot 318 Deposited Plan 480473	Fee Simple Title	0.0549 Ha	671381
Lot 319 Deposited Plan 480473	Fee Simple Title	0.0549 Ha	671382
Lot 320 Deposited Plan 480473	Fee Simple Title	0.0549 Ha	671383
Lot 321 Deposited Plan 480473	Fee Simple Title	0.0549 Ha	671384
Lot 322 Deposited Plan 480473	Fee Simple Title	0.0549 Ha	671385
Lot 323 Deposited Plan 480473	Fee Simple Title	0.0549 Ha	671386
Lot 324 Deposited Plan 480473	Fee Simple Title	0.0495 Ha	671387
Lot 325 Deposited Plan 480473	Fee Simple Title	0.0574 Ha	671388
Lot 326 Deposited Plan 480473	Fee Simple Title	0.0374 Ha	671389
Lot 327 Deposited Plan 480473	Fee Simple Title	0.0375 Ha	671390
Lot 328 Deposited Plan 480473	Fee Simple Title	0.0450 Ha	671391
Lot 329 Deposited Plan 480473	Fee Simple Title	0.0462 Ha	671392
Lot 330 Deposited Plan 480473	Fee Simple Title	0.0420 Ha	671393
Lot 331 Deposited Plan 480473	Fee Simple Title	0.0418 Ha	671394
Lot 332 Deposited Plan 480473	Fee Simple Title	0.0549 Ha	671395



# Title Plan - LT 480473

## Created Parcels

Parcels	Parcel Intent	Area	CT Reference
Lot 333 Deposited Plan 480473	Fee Simple Title	0.0548 Ha	671396
Lot 334 Deposited Plan 480473	Fee Simple Title	0.0495 Ha	671397
Lot 335 Deposited Plan 480473	Fee Simple Title	0.0431 Ha	671398
Lot 336 Deposited Plan 480473	Fee Simple Title	0.0549 Ha	671399
Lot 337 Deposited Plan 480473	Fee Simple Title	0.0549 Ha	671400
Lot 338 Deposited Plan 480473	Fee Simple Title	0.0549 Ha	671401
Lot 339 Deposited Plan 480473	Fee Simple Title	0.0549 Ha	671402
Lot 340 Deposited Plan 480473	Fee Simple Title	0.0549 Ha	671403
Lot 341 Deposited Plan 480473	Fee Simple Title	0.0549 Ha	671404
Lot 342 Deposited Plan 480473	Fee Simple Title	0.0338 Ha	671405
Lot 343 Deposited Plan 480473	Fee Simple Title	0.0413 Ha	671406
Lot 350 Deposited Plan 480473	Fee Simple Title	0.0344 Ha	671407
Lot 351 Deposited Plan 480473	Fee Simple Title	0.0549 Ha	671408
Lot 352 Deposited Plan 480473	Fee Simple Title	0.0549 Ha	671409
Lot 353 Deposited Plan 480473	Fee Simple Title	0.0549 Ha	671410
Lot 354 Deposited Plan 480473	Fee Simple Title	0.0549 Ha	671411
Lot 355 Deposited Plan 480473	Fee Simple Title	0.0556 Ha	671412
Lot 356 Deposited Plan 480473	Fee Simple Title	0.0556 Ha	671413
Lot 357 Deposited Plan 480473	Fee Simple Title	0.0549 Ha	671414
Lot 358 Deposited Plan 480473	Fee Simple Title	0.0549 Ha	671415
Lot 359 Deposited Plan 480473	Fee Simple Title	0.0549 Ha	671416
Lot 360 Deposited Plan 480473	Fee Simple Title	0.0549 Ha	671417
Lot 361 Deposited Plan 480473	Fee Simple Title	0.0344 Ha	671418
Lot 362 Deposited Plan 480473	Fee Simple Title	0.0335 Ha	671419
Lot 363 Deposited Plan 480473	Fee Simple Title	0.0335 Ha	671420
Lot 364 Deposited Plan 480473	Fee Simple Title	0.0335 Ha	671421
Lot 365 Deposited Plan 480473	Fee Simple Title	0.0288 Ha	671422
Lot 366 Deposited Plan 480473	Fee Simple Title	0.0288 Ha	671423
Lot 367 Deposited Plan 480473	Fee Simple Title	0.0288 Ha	671424
Lot 368 Deposited Plan 480473	Fee Simple Title	0.0288 Ha	671425
Lot 369 Deposited Plan 480473	Fee Simple Title	0.0288 Ha	671426
Lot 370 Deposited Plan 480473	Fee Simple Title	0.0349 Ha	671427
Lot 371 Deposited Plan 480473	Fee Simple Title	0.0471 Ha	671428
Lot 380 Deposited Plan 480473	Fee Simple Title	0.0343 Ha	671429
Lot 381 Deposited Plan 480473	Fee Simple Title	0.0319 Ha	671430
Lot 382 Deposited Plan 480473	Fee Simple Title	0.0295 Ha	671431
Lot 942 Deposited Plan 480473	Fee Simple Title	4.9872 Ha	671432
Lot 952 Deposited Plan 480473	Vesting on Deposit for Road	0.7427 Ha	
Lot 953 Deposited Plan 480473	Vesting on Deposit for Road	0.4714 Ha	
Lot 954 Deposited Plan 480473	Vesting on Deposit for Local Purpose Reserve	0.0220 Ha	671433
Lot 963 Deposited Plan 480473	Fee Simple Title	0.0005 Ha	671487



# Title Plan - LT 480473

---

## Created Parcels

Parcels	Parcel Intent	Area	CT Reference
Area A Deposited Plan 480473	Easement		
Area B Deposited Plan 480473	Easement		
Area C Deposited Plan 480473	Easement		
Area D Deposited Plan 480473	Easement		
Area E Deposited Plan 480473	Easement		
Area F Deposited Plan 480473	Easement		
Area G Deposited Plan 480473	Easement		
Area H Deposited Plan 480473	Easement		
Area I Deposited Plan 480473	Easement		
Area J Deposited Plan 480473	Easement		
Area K Deposited Plan 480473	Easement		
Area L Deposited Plan 480473	Easement		
Area M Deposited Plan 480473	Easement		
Area N Deposited Plan 480473	Easement		
Area O Deposited Plan 480473	Easement		
Area P Deposited Plan 480473	Easement		
<b>Total Area</b>		<hr/> 8.8484 Ha	

# Schedule / Memorandum



**DAVIE LOVELL·SMITH**

PLANNING SURVEYING ENGINEERING

Davie, Lovell-Smith Ltd  
 116 Wrights Road,  
 PO Box 679, Christchurch 8140,  
 New Zealand  
 Telephone (03) 379-0793,  
 E-mail: office@dls.co.nz

Our Ref: E18499

D.P.480473

## MEMORANDUM OF EASEMENTS

Purpose	Servient Tenement	Shown	Dominant Tenement
Right of way, rights to drain water and sewage and rights to convey gas, water, electricity, telecommunications and computer media	Lot 334 Lot 333 Lot 942 Lot 325 Lot 332 Lot 342 Lot 343 Lot 942 Lot 371 Lot 380 Lot 381 Lot 382	A B C D E F G H I J K L	Lots 325, 332, 333 & 942 Lots 325, 332, 334 & 942 Lots 325, 332, 333 & 334 Lots 332, 333, 334 & 942 Lots 325, 333, 334 & 942 Lots 343, 371, 380, 381, 382 & 942 Lots 342, 371, 380, 381, 382 & 942 Lots 342, 343, 371, 380, 381 & 382 Lots 342, 343, 380, 381, 382 & 942 Lots 342, 343, 371, 381, 382 & 942 Lots 342, 343, 371, 380, 382 & 942 Lots 342, 343, 371, 380, 381 & 942
Right to convey electricity in gross	Lot 334 Lot 333 Lot 942 Lot 325 Lot 332 Lot 342 Lot 343 Lot 942 Lot 371 Lot 380 Lot 381 Lot 382	A B C D E F G H I J K L	<u>Grantee</u>  Orion New Zealand Ltd
Right to convey telecommunications and computer media in gross.	Lot 334 Lot 333 Lot 942 Lot 325 Lot 332 Lot 342 Lot 343 Lot 942 Lot 371 Lot 380 Lot 381 Lot 382	A B C D E F G H I J K L	Enable Networks Ltd

# Schedule / Memorandum



DAVIE LOVELL·SMITH

PLANNING SURVEYING ENGINEERING

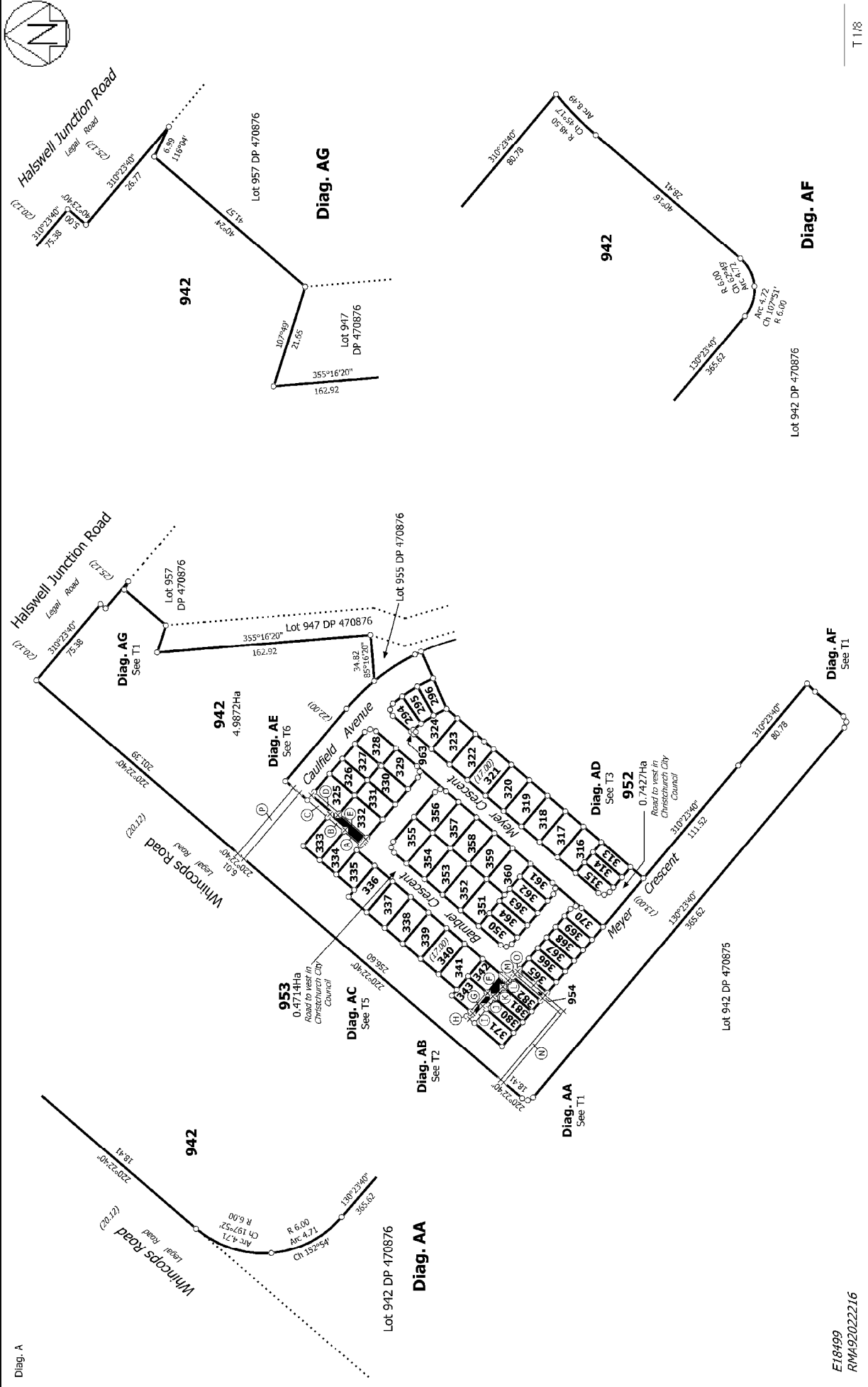
Davie, Lovell-Smith Ltd  
116 Wrights Road,  
PO Box 679, Christchurch 8140,  
New Zealand  
Telephone (03) 379-0793,  
E-mail: office@dls.co.nz

Our Ref: E18499

D.P.480473

## SCHEDULE OF EASEMENTS

Purpose	Servient Tenement	Shown	Grantee
Right to convey electricity in gross	Lot 954	O	Orion New Zealand Ltd
Right to drain sewage in gross	Lot 954 Lot 942	M N & P	Christchurch City Council



<p>Diag. A</p>	<p>Lot 942 DP 470876</p>	<p>Diag. AA See T1</p>	<p>Diag. AB See T2</p>	<p>Diag. AC See T5</p>	<p>Diag. AD See T3</p>	<p>Diag. AE See T6</p>	<p>Diag. AG See T1</p>	<p>Diag. AF See T1</p>
<p>Diag. A</p>	<p>Lot 942 DP 470876</p>	<p>Diag. AA See T1</p>	<p>Diag. AB See T2</p>	<p>Diag. AC See T5</p>	<p>Diag. AD See T3</p>	<p>Diag. AE See T6</p>	<p>Diag. AG See T1</p>	<p>Diag. AF See T1</p>

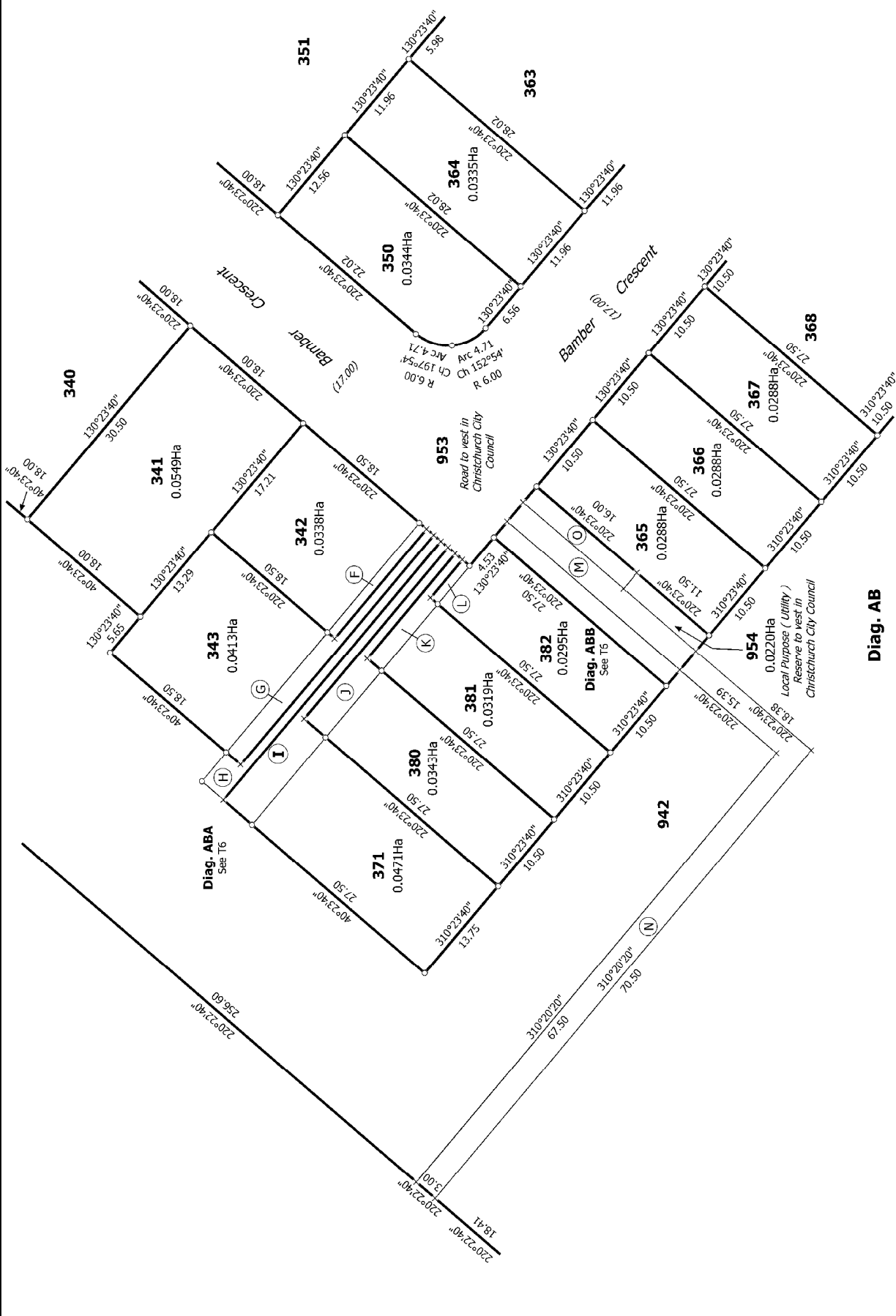
E16499  
RMA/2022/216

Land District: Canterbury  
Digitally Generated Plan  
Generated on: 29/09/2014 3:11 pm Page 6 of 13

Lots 294-296, 313-343, 350-371, 380-382, 942, 952-954 and 963-965 being  
Subdivision of Lot 942 DP 474650

Surveyor: Christopher David Hawes  
Firm: Davie Lovell-Smith Ltd

Title Plan  
LT 480473  
DRAFT



Land District: Canterbury	Surveyor: Christopher David Hawes Firm: Davie Lovell-Smith Ltd	Title Plan LT 480473 DRAFT
Digitally Generated Plan Generated on: 29/09/2014 13:11 pm Page 7 of 13		Lots 294-296, 313-343, 350-371, 380-382, 942, 952-954 and 963 being Subdivision of Lot 942 DP 474650



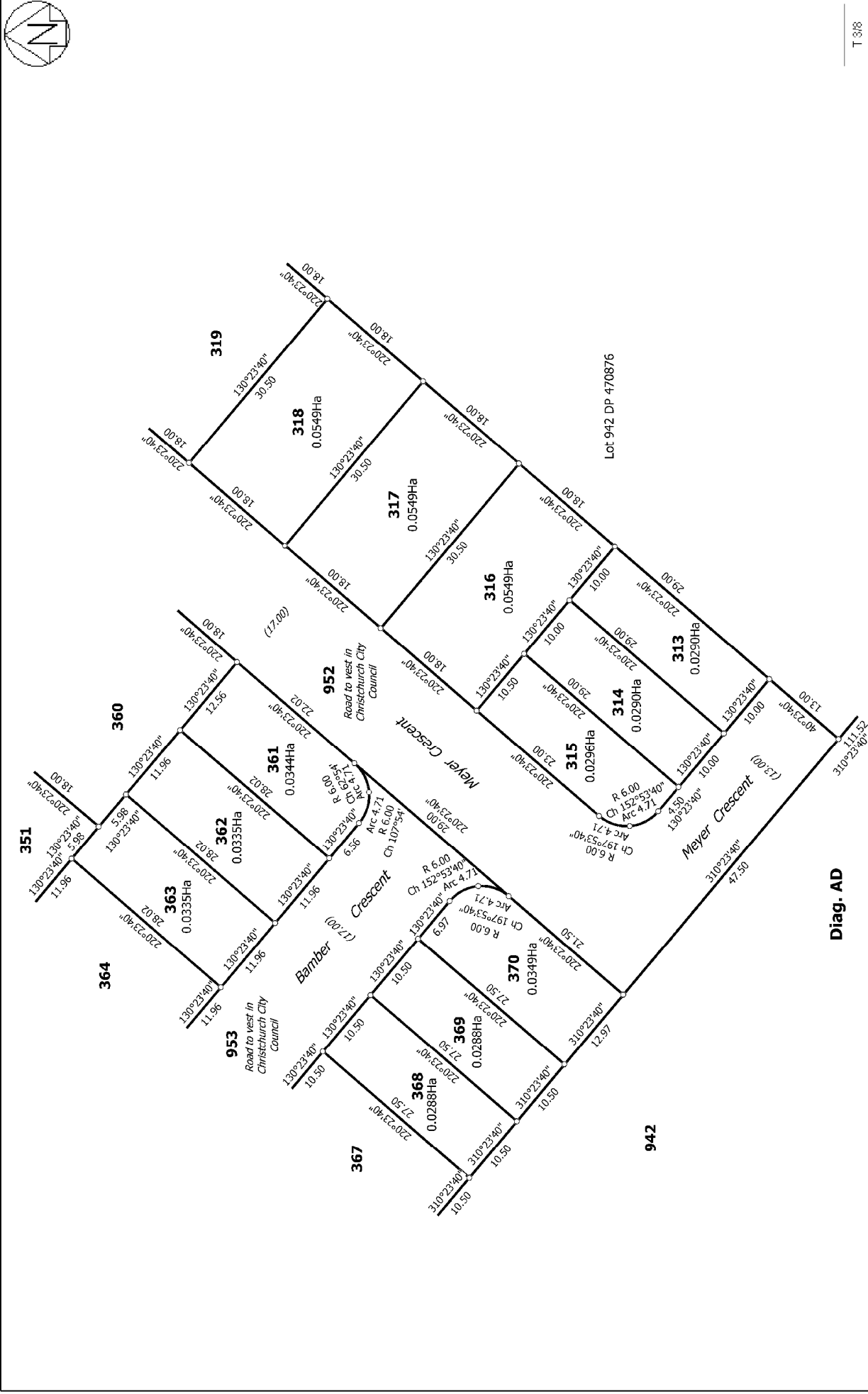
T 318

Title Plan  
LT 480473  
DRAFT

Surveyor: Christopher David Hawes  
Firm: Davie Lovell-Smith Ltd

Lots 294-296, 313-343, 350-371, 380-382, 942, 952-954 and 963 being  
Subdivision of Lot 942 DP 474650

Land District: Canterbury  
Digitally Generated Plan  
Generated on: 29/09/2014 3:11 pm Page 6 of 13

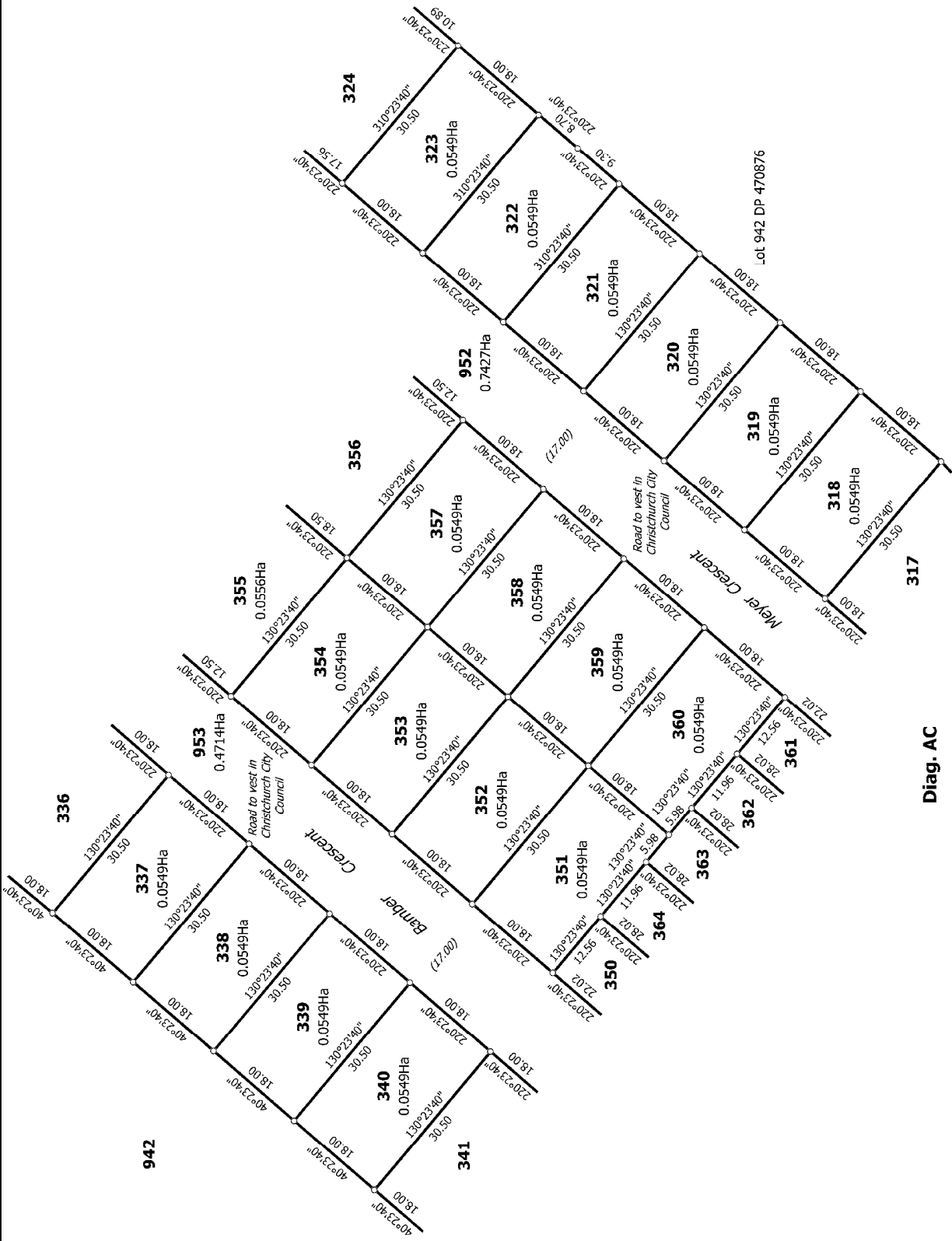


Diag. AD

Lot 942 DP 470876

Canterbury Land District

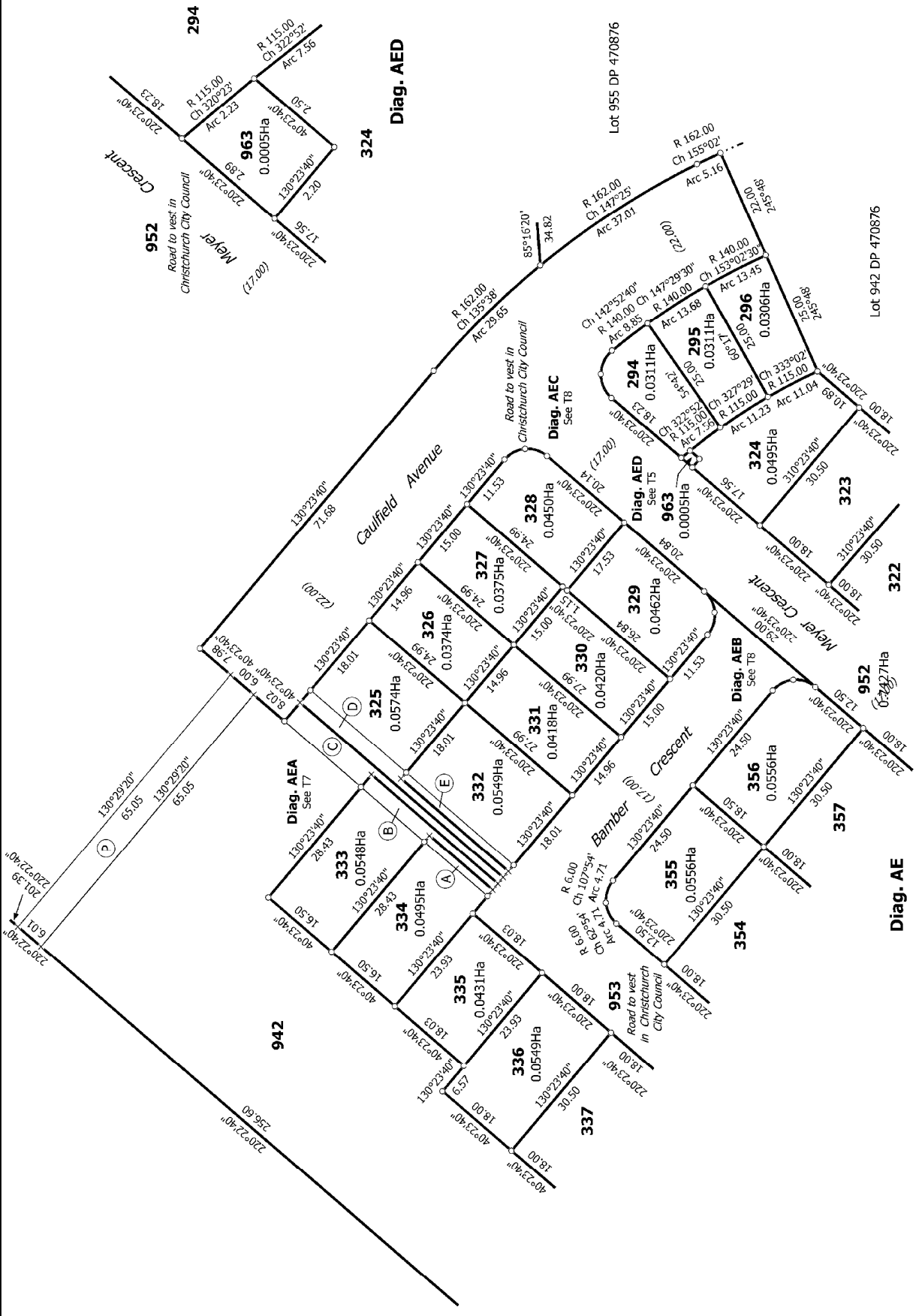




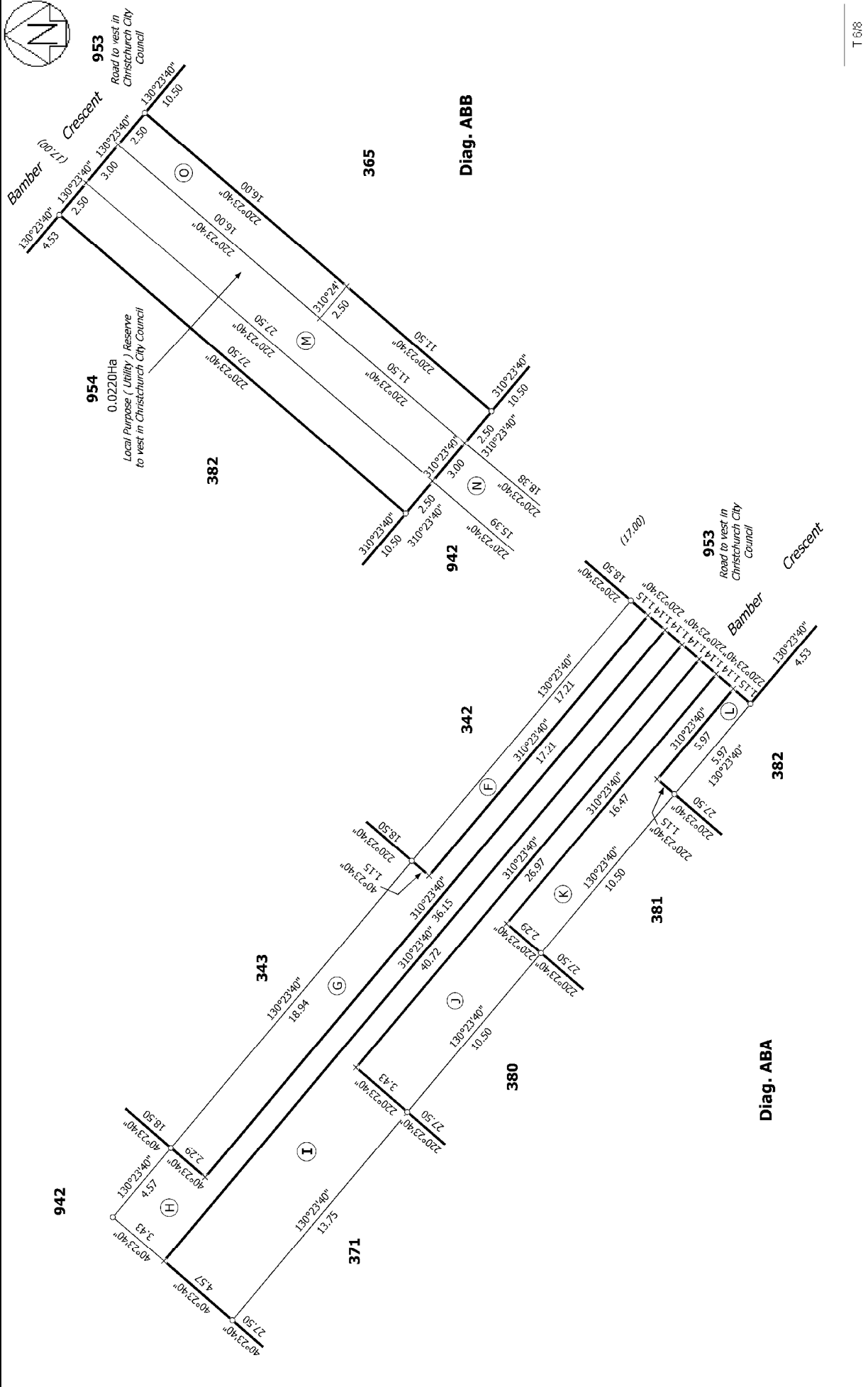
Diag. AC

T 418

<p>Land District: Canterbury</p> <p><b>Digitally Generated Plan</b></p> <p>Generated on: 29/09/2014 13:11 pm Page 9 of 13</p>	<p><b>Subdivision of Lot 942 DP 474650</b></p> <p>Lots 294-296, 313-343, 350-371, 380-382, 942, 952-954 and 963 being</p>	<p>Surveyor: Christopher David Hawes</p> <p>Firm: Davie Lovell-Smith Ltd</p>
<p><b>Title Plan</b></p> <p><b>LT 480473</b></p> <p><b>DRAFT</b></p>		<p>T 418</p>

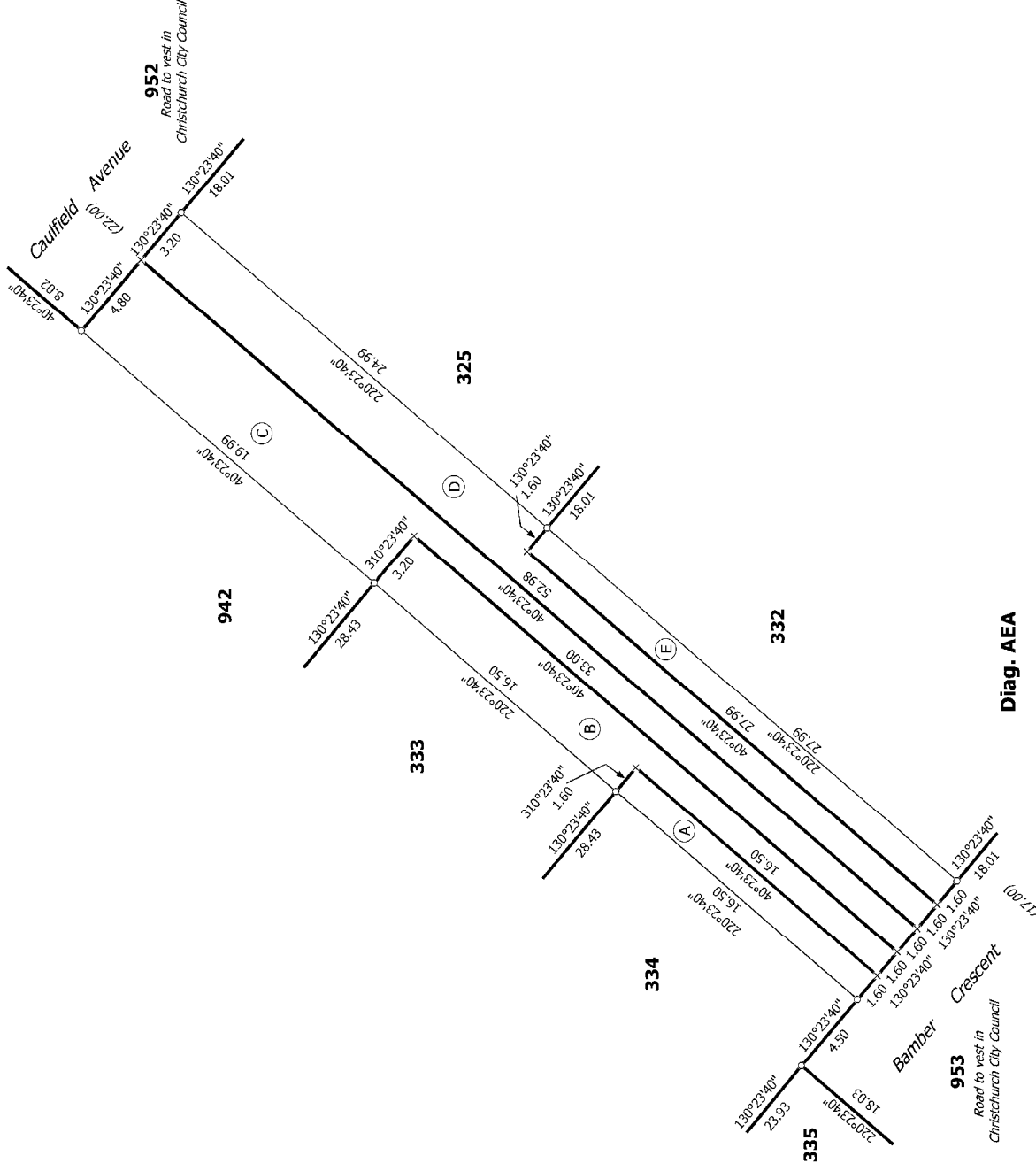


<p>Land District: Canterbury</p> <p><b>Digitally Generated Plan</b></p> <p>Generated on: 29/09/2014 3:11 pm Page 10 of 13</p>	<p><b>Title Plan</b> LT 480473 DRAFT</p>	<p>Surveyor: Christopher David Hawes Firm: Davis Lovell-Smith Ltd</p>	<p><b>Lots 294-296, 313-343, 350-371, 380-382, 942, 952-954 and 963 being</b> Subdivision of Lot 942 DP 474650</p>
---	--	---	--



T 618

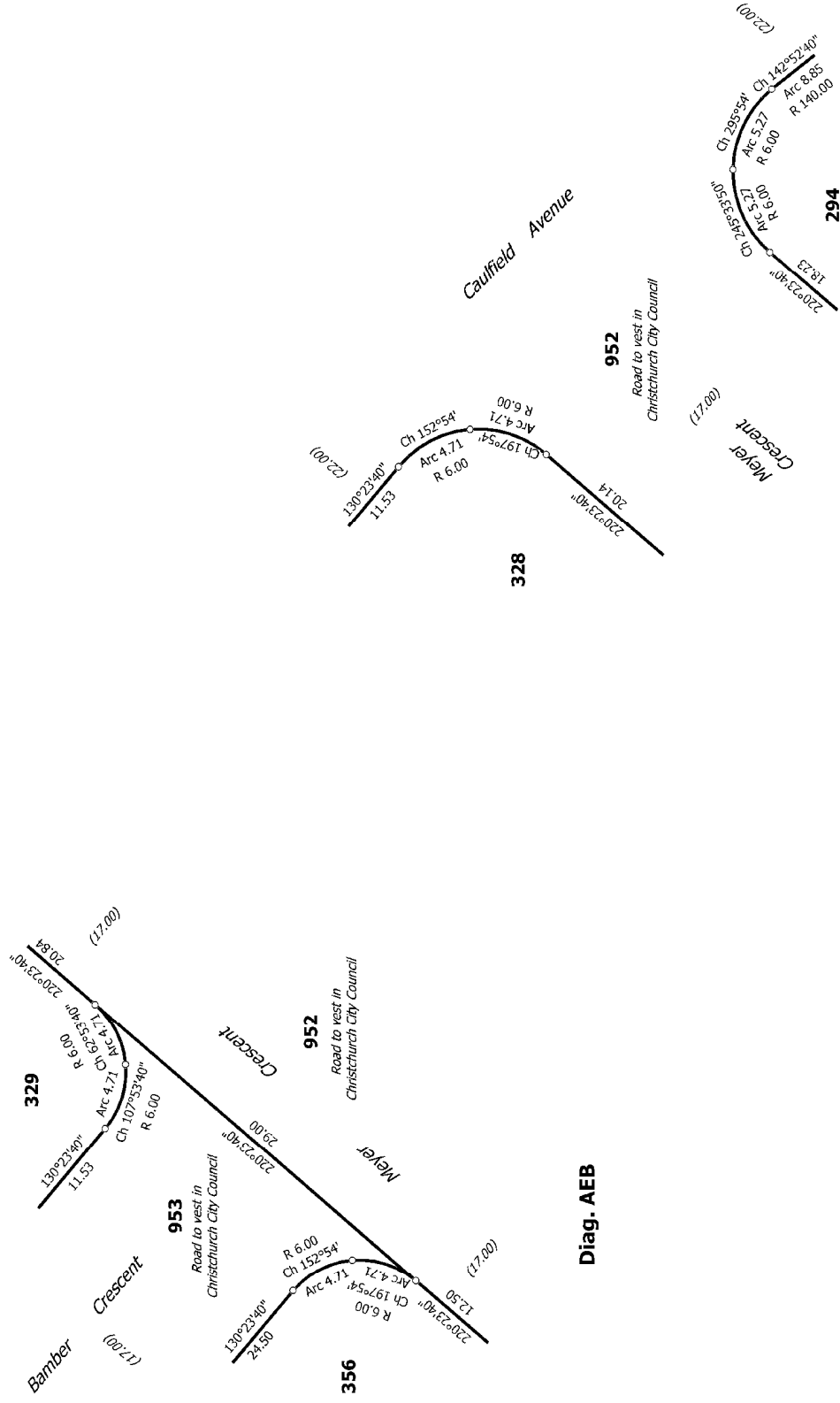
Land District: Canterbury	Surveyor: Christopher David Hawes Firm: Davie Lovell-Smith Ltd	Title Plan LT 480473 DRAFT
Lots 294-296, 313-343, 350-371, 380-382, 942, 952-954 and 963 being Subdivision of Lot 942 DP 474650		
Digitally Generated Plan Generated on: 29/09/2014 3:11 pm Page 11 of 13		



Diag. AEA

T 718

Land District: Canterbury <b>Digitally Generated Plan</b> Generated on: 29/09/2014 3:11 pm Page 12 of 13	Surveyor: Christopher David Hawes Firm: Davie Lovell-Smith Ltd	Lots 294-296, 313-343, 350-371, 380-382, 942, 952-954 and 963 being Subdivision of Lot 942 DP 474650	<b>Title Plan</b> LT 480473 DRAFT
--	---	---	---



Diag. AEB

Diag. AEC

T 818

Land District: Canterbury	Surveyor: Christopher David Hawes Firm: Davie Lovell-Smith Ltd	Title Plan LT 480473 DRAFT
Lots 294-296, 313-343, 350-371, 380-382, 942, 952-954 and 963 being Subdivision of Lot 942 DP 474650		Digitally Generated Plan Generated on: 29/09/2014 3:11 pm Page 13 of 13